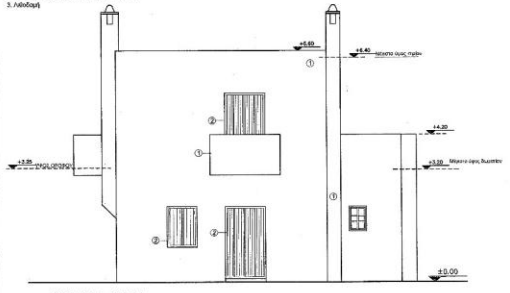
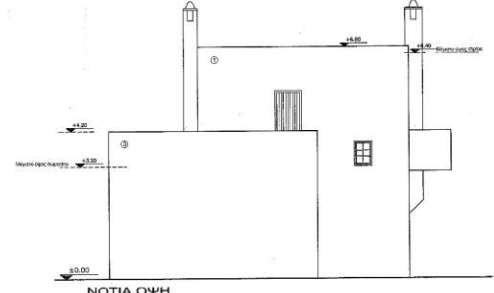


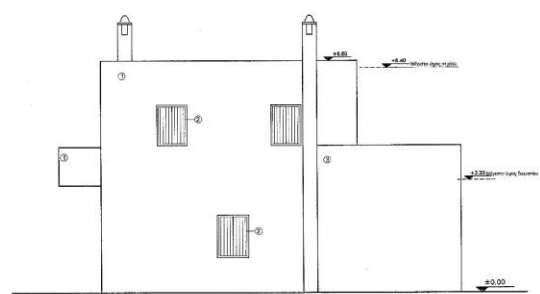
- ΥΠΟΜΕΤΡΑ ΤΑΞΕΩΣ
1. Επιπέδου σε υψος ορόφου (0,00)
 2. Ξύλινο καλοριμάκι (προβλεπόμενα 6,00x60x60cm)
 3. Λαβή



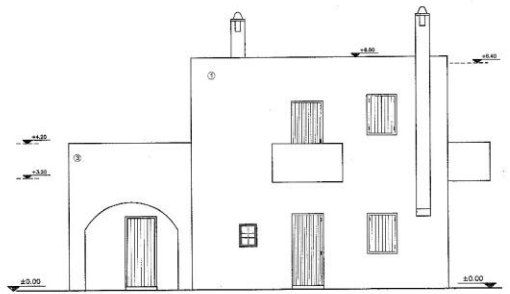
ΒΟΡΕΙΑ ΟΨΗ



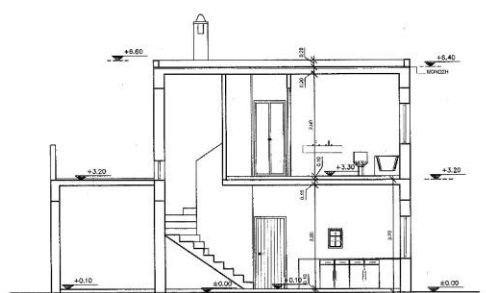
ΝΟΤΙΑ ΟΨΗ



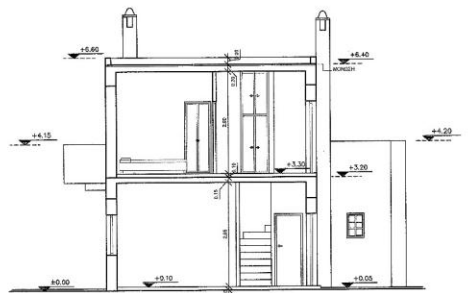
ΔΥΤΙΚΗ ΟΨΗ



ΑΝΑΤΟΛΙΚΗ ΟΨΗ



ΤΟΜΗ Α-Α



ΤΟΜΗ Β-Β